

COMMUNITY WELLBEING FRAMEWORK • STAKEHOLDER ENGAGEMENT • LGTBQ+ • RICK HANSEN CERTIFICATION • ACCESSIBILITY • CPTED • INTEGRATED SITE DESIGN • MULTI MODAL • INDOOR OUTDOOR CONNECTIVITY • FINA • SAND VS DE • UNIVERSAL CHANGE • HIGH PERFORMANCE ENVELOPE • DIN RATING • COURT ORIENTATION • LIGHTING • AIR QUALITY • COMMUNITY LIVING ROOM • BEYOND COVID • RESILIENCE • CONSTRUCTION COST ESCALATION • SUPPLY CHAIN • DURABILITY • PASSIVE HOUSE • NET ZERO • LEED • CLIMATE CRISIS • WELL BUILDING • **PLACE MAKING • FORM MAKING • EXPERIENCE MAKING** • AMMONIA VS CO2 REFRIGERATION • LEISURE ICE • LIGHTING • ACOUSTICS • PUBLIC ART • HISTORICAL CONTEXT • RECONCILIATION • DIGNITY • BIOPHILIC DESIGN • WELLNESS • WAYFINDING • UNSTRUCTURED PLAY • INNOVATION • PROGRAM FLEXIBILITY • FORM + FUNCTION • COMPETITIVE • PLAYFUL • INSPIRATIONAL • JOYFUL • RECREATIONAL • WELCOMING • COMMUNITY LIVING ROOM • HEALING • URBAN HUB • LANDSCAPE INTEGRATION • MATERIALITY + TEXTURE • POLITICAL • SOCIAL • CULTURAL • ENVIRONMENTAL • ECONOMIC COMMUNITY WELL BEING FRAMEWORK • STAKEHOLDER ENGAGEMENT • LGTBQ+ • RICK HANSEN CERTIFICATION • ACCESSIBILITY • CPTED • INTEGRATED SITE DESIGN • MULTI MODAL • INDOOR OUTDOOR CONNECTIVITY • FINA • SAND VS DE • UNIVERSAL CHANGE • HIGH PERFORMANCE ENVELOPE • DIN RATING • COURT ORIENTATION • LIGHTING • AIR QUALITY • COMMUNITY LIVING ROOM • BEYOND COVID • RESILIENCE • CONSTRUCTION COST ESCALATION • SUPPLY CHAIN • DURABILITY • PASSIVE HOUSE • NET ZERO • LEED • CLIMATE CRISIS • WELL BUILDING • **PLACE MAKING • FORM MAKING • EXPERIENCE MAKING** • AMMONIA VS CO2 REFRIGERATION • LEISURE ICE • LIGHTING • ACOUSTICS • PUBLIC ART • HISTORICAL CONTEXT • RECONCILIATION • DIGNITY • BIOPHILIC DESIGN • WELLNESS • WAYFINDING • UNSTRUCTURED PLAY • INNOVATION • PROGRAM FLEXIBILITY • FORM + FUNCTION • COMPETITIVE • PLAYFUL • INSPIRATIONAL • JOYFUL • RECREATIONAL • WELCOMING • COMMUNITY LIVING ROOM • HEALING • URBAN HUB • LANDSCAPE INTEGRATION • MATERIALITY + TEXTURE • POLITICAL • SOCIAL • CULTURAL • ENVIRONMENTAL • ECONOMIC COMMUNITY WELL BEING FRAMEWORK • STAKEHOLDER

DIALOG

ENHANCING COMMUNITY WELLBEING “SPONTANEOUS PLAY”



The Shipyards, North Vancouver, BC



The Shipyards, North Vancouver, BC



sθaq̄lxenəm ts'exwts'áxwi7 Rainbow Park, Vancouver, BC

sθəqəlxenəm ts'exwts'áxwi7 Rainbow Park



DIALOG worked with Vancouver Board of Parks and Recreation to design this unique and highly innovative park, setting a new direction for park design in the city.

As Downtown Vancouver's first new park in over 10 years, this vibrant and inclusive space is the Park Board's gift to its residents. It's also the city's first park gifted a name by the Musqueam, Squamish and Tseil-Waututh (MST) Nations; **sθəqəlxenəm ts'exwts'áxwi7** meaning 'rainbow' as the site was once "a marsh where the sun and mist formed rainbows".

Through effective public and stakeholder engagement, and needs assessment exercises, a comprehensive dialogue was initiated between the client, design team, and the community, eliciting valuable insight from residents and local business owners, along with their site-specific knowledge and community considerations.

The park's design exemplifies inclusive and creative engagement tactics by an interdisciplinary design team through extensive research and applying the City's policy guidelines. Keeping the public and future users of the park informed and engaged throughout the ongoing design process helped establish the most responsive and appropriate park design while simultaneously fostering civic pride and a community spirit that continues to inspire pride of ownership long after the design team fulfilled its role.

Bringing green space to the city center, Rainbow Park provides a place to gather, engage in social activities, enjoy an on-site café, and to take in one's environment from the pedestrian bridge.

The program was consciously assembled in anticipation of an emerging new Vancouver and delivers a community space developed by DIALOG's team in tandem with a visionary and collaborative client. This concerted planning and analysis cultivated an iconic, memorable, and impactful design: a magnetic, multilayered, and effectively programmed 'community porch'.

The community porch concept comprises three key elements: first, the café pavilion that feeds life and energy into the space. Secondly, the pedestrian bridge; an elevated structure that weaves over and across the park as both lookout and a foil for the adjacent tall towers.



Hammocks and art installations attached to the bridge further activate the space. And thirdly, "sky frames"; a series of structural metal arches aligned diagonally along the park's spine, linking the three spaces. These functional armatures allow art pieces, banners, or custom lighting displays to be curated by local art institutions.

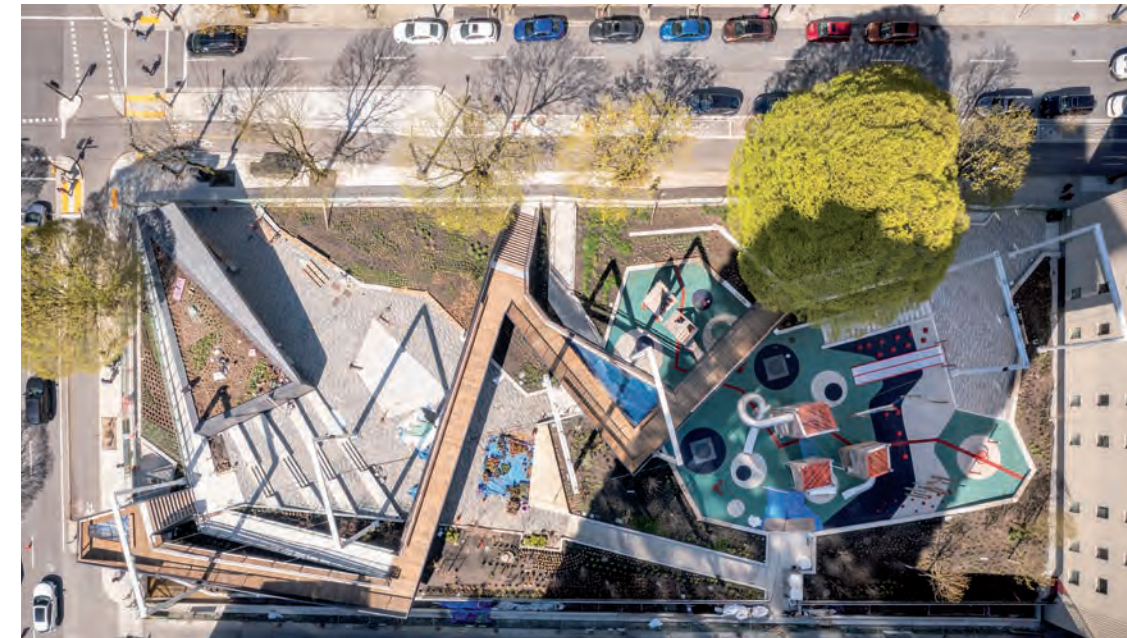
Justin McElroy, Municipal Affairs Reporter for CBC Vancouver, recently described the space as

"an exemplar of landscape architecture done well"

ranking it #2 for parks in Downtown Vancouver, and #12 overall against 240+ parks in Greater Vancouver.

The integrated project team blurred the lines between architecture and bridge engineering to create a vibrant public space. The design is not only a response to the site and its social context, but also a precedent of an emerging Vancouver as a whole. The city and downtown community have a world-class space that activates communal porches for area residents, office workers, and tourists alike.

Since opening in Spring 2022, sθəqəlxenəm ts'exwts'áxwi7 Rainbow Park has been celebrated by the community as a unique multi-dimensional space in the heart of downtown.



Feeling spontaneous? Why not check out the park for yourself...

