



Managing Risk in Recreation Spaces

Jenn Houtby-Ferguson, CMP CMM

BC RECREATION AND PARKS ASSOCIATION SYMPOSIUM
MAY 1, 2024 | PENTICTON, BC

AGENDA

01

Issues, Crises,
Hazards and
Risks

02

Scenarios

03

Misinformation

04

Resources

NERD ALERT!

Twist Consulting



SLIDO.COM

#1997399



TAKEAWAYS
FOR TODAY

Post Pandemic Impacts



People are cranky!



SLIDO.COM

1997399

WHAT KEEPS
YOU UP AT
NIGHT?

“

CANADA'S 2024 WILDFIRE SEASON EXPECTED TO BE
EVEN WORSE THAN LAST YEAR'S

The warm fall and winter conditions throughout the country, as well as droughts, and minimal snowfall are all factors that contribute to a more intense fire season

National Post, April 17, 2024

“

CANADA'S 2024 WILDFIRE SEASON EXPECTED TO BE
EVEN WORSE THAN LAST YEAR'S

The warm fall and winter conditions throughout the country, as well as droughts, and minimal snowfall are all factors that contribute to a more intense fire season

National Post, April 17, 2024

Critical Analysis & Risk Evaluation



A bright yellow inflatable ring is floating in clear, rippling blue water. The water's surface is covered in intricate, shimmering patterns of light and shadow, suggesting a sunny day. The ring is positioned in the lower-left to center area of the frame.

ISSUE VS CRISIS

Issue vs Crisis

ISSUE: Negative problem that could escalate if not adequately addressed—usually a minor misstep.

- Customer or employee complaints
- Inconvenient and maybe amplified on social media

Example: The pool is closed due to illness and people are angry.

CRISIS: Significant (usually) unexpected event impacting operations, reputation, or safety, requiring immediate attention.

Example: Allegations of sexual harassment against a member of your team or a user group in your facility.

“

IF YOU SEE SOMETHING
SAY SOMETHING

Can we anticipate what's next?



Watch:

Weather conditions are favourable for severe weather. Take the time to prepare, and monitor local authorities for updates.

Warning:

You are in the risk zone, and severe weather is imminent or occurring. Take shelter/action immediately.

“

HAZARD:
A CONDITION WITH THE
POTENTIAL FOR HARM TO THE
COMMUNITY OR ENVIRONMENT.

FEMA

“

RISK:

THE LIKELIHOOD OF OCCURRENCE

FEMA



HAZARD: CORDS
RISK: TRIPPING

SLIDO.COM

1997399

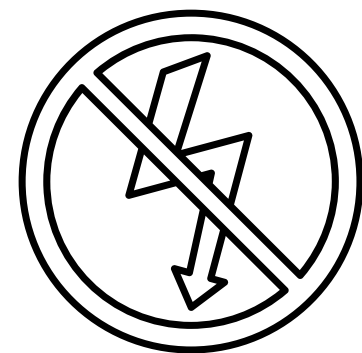


HAZARD
IDENTIFICATION

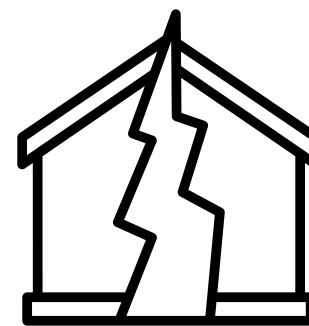
BC Hazards



Avalanche



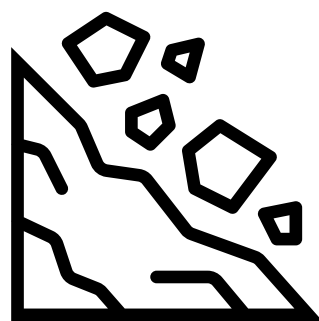
Power Outage



Earthquake



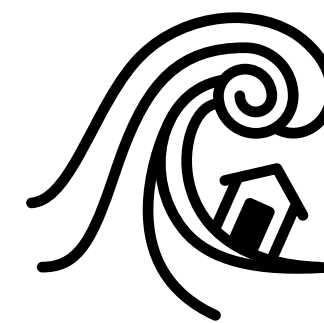
Flooding



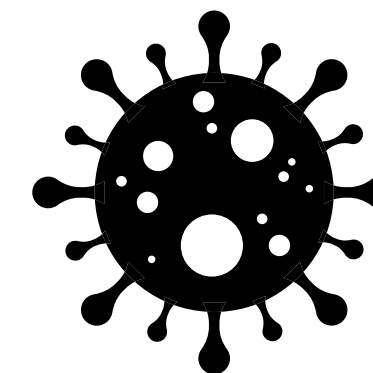
Landslide



Severe Weather



Tsunami



Pandemics and Disease Outbreak



Wildfire



Hazardous Material



**WHAT IS
MISSING?**

Geopolitical or Sectoral Issues



Critical Infrastructure



(Bad) People



Evacuation Alert: Time to prepare.

Be ready to go at a moment's notice. Gather important documents, medications, photos, pet supplies, food, water, emergency kit and seasonal clothing. Monitor local authorities for updates.

Evacuation Order: Leave NOW!

You are at risk. Leave the area immediately, and follow instructions for registration.

Tactical Evacuation: Lead by EM agencies for sudden threats to life, happen with little warning and no time to issue an order.

WORST CASE SCENARIO

1

ALLEGATIONS OF
SEXUAL
MISCONDUCT BY A
TEAM MEMBER,
PROTESTS AT THE
POOL

2

WILDFIRE
APPROACHING
THE CITY, NO
TIME FOR
PARENTS TO
COLLECT THEIR
KIDS

3

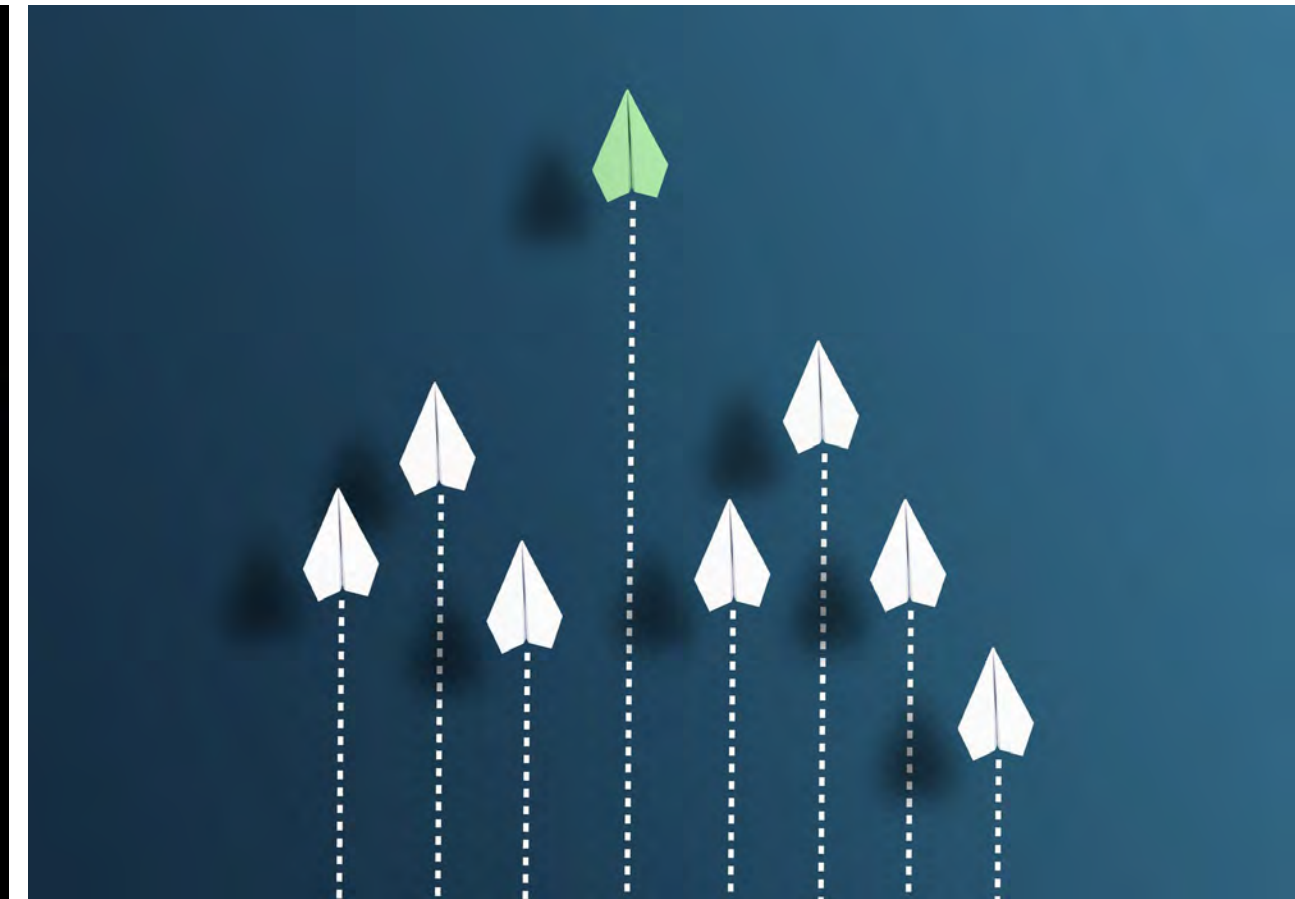
FULL FACILITY
LOCKDOWN DUE
TO NEARBY
INCIDENT



EVERYBODY
OK?

#PREPAREDNOTSCARED

Information Sources



Changing Information



Misinformation & Disinformation

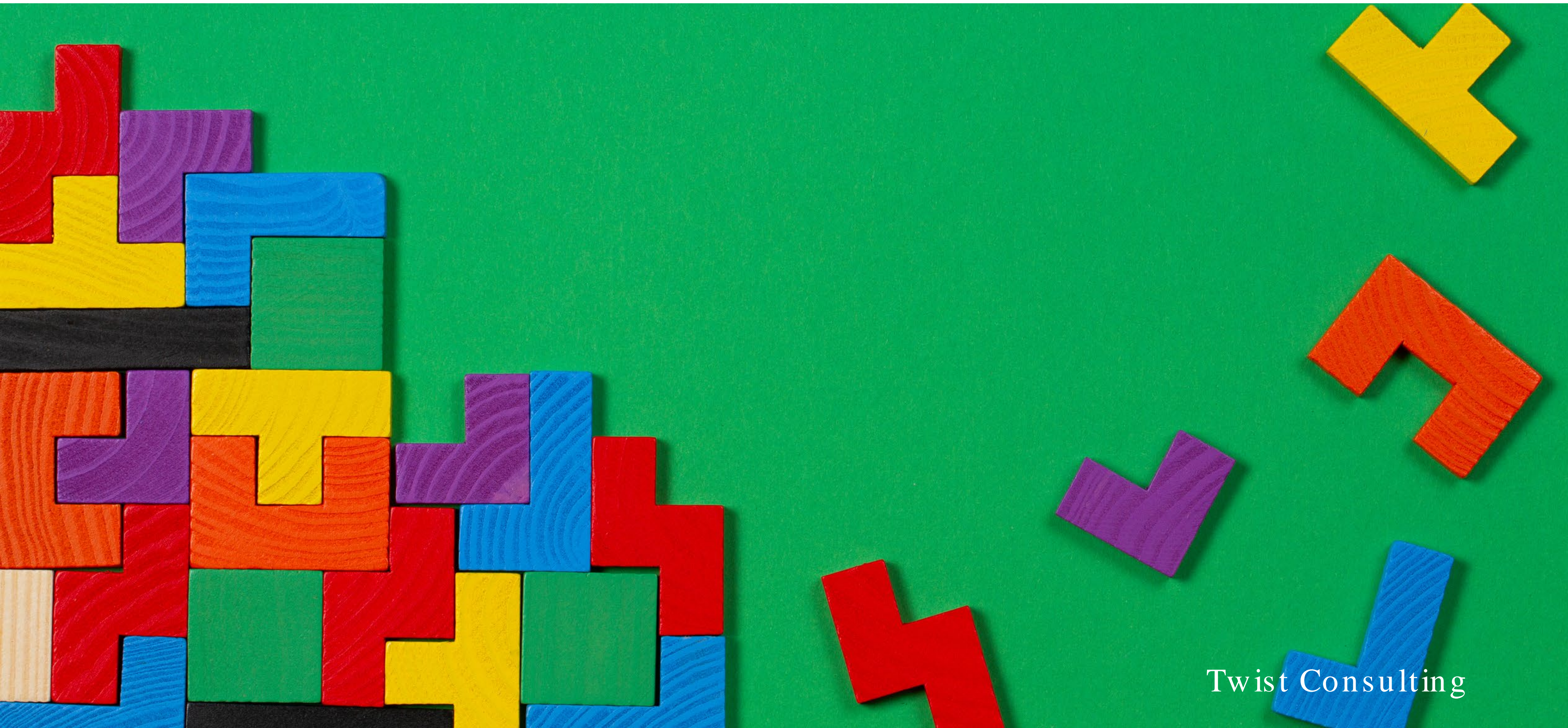


“

FAILING TO PLAN IS
PLANNING TO FAIL

Sir Winston Churchill

Build Community Connections



Is everyone at the table?



Diverse Abilities Considerations



Reactive Mode: Everything is Urgent!

A close-up photograph of a human hand hovering just above a row of white, three-dimensional letter blocks. The blocks are arranged to spell out the word 'PROACTIVE' in all capital letters. The background is a soft, out-of-focus green and blue gradient. The lighting is bright, creating a slight shadow on the surface below the blocks.

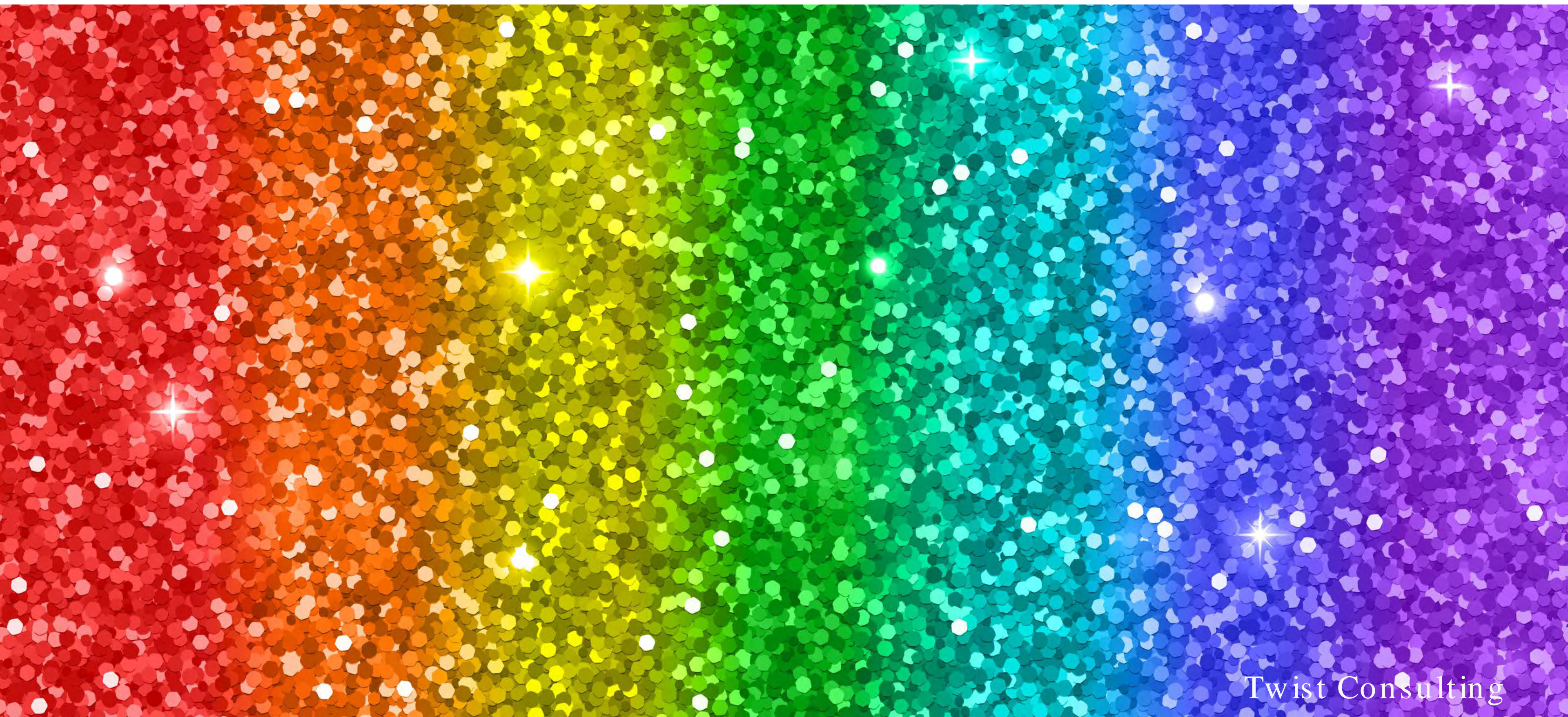
P R O A C T I V E

Check your source



Twist Consulting

Language Matters




Strong Social Media Policies



Training is Critical





Earthquake Early Warning Coming 2024!

— 50 earthquake sensors are
installed in BC

#PREPAREDNOTSCARED

Credible Sources & Resources

Plans, Guides and Information

- [Prepared BC](#)
- Indigenous Gov & Municipalities
- BCRPA
- [First Nations Principles of Ownership, Control, Access and Possession](#)
- [Writing for Indigenous Content](#)
- [Words Matter: Guidelines for Inclusive Language](#)

On X

@PreparedBC

@EmergencyInfoBC

@DriveBC

@NWS_NTW_C

@InterHealth

Official Hashtags

#BCwildfire

#BCFlood

#BCStorm

PREPARED NOT SCARED

Jenn Houtby-Ferguson, CMP CMM

Vancouver Island University & Twist Consulting

E: Jenn.Houtby-Ferguson@viu.ca

C: 250-713-9849

X: [@JennHoutby](#) | [#PreparedNotScared](#)